

MiURA

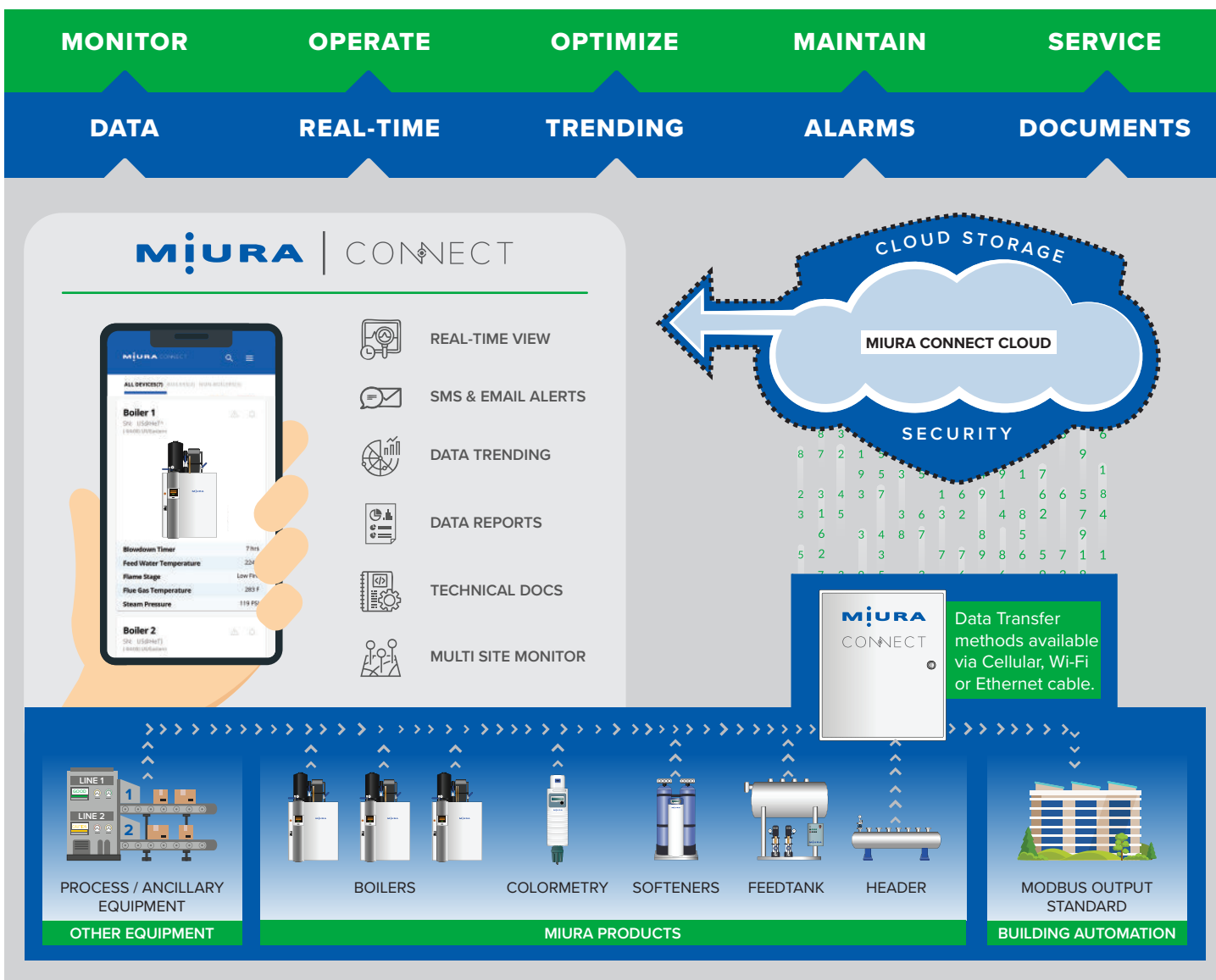


MiURA | CONNECT

Online Steam Equipment Monitoring

STEAM GENERATION DATA AT YOUR FINGERTIPS

Since 1989, Miura has recognized the value and importance of remotely monitoring critical steam infrastructure. Our dedication to providing innovative around the clock monitoring began by harnessing the power of a much simpler connection – analog phone lines. By utilizing analog lines to connect to boiler rooms around the world, Miura was able to provide unmatched service and support directly from the manufacturer, without always being on-site. In addition, the data collected over the past 30 years from thousands of steam boiler systems drives continuous product improvement and makes Miura the leader in remote monitoring within the steam industry.



Now utilizing modern IoT Technology and Cloud Based Solutions, Miura tracks more data than ever and makes that data accessible directly by the customer for the first time. Miura Connect offers the latest monitoring technology developed by experts with over 30 years of knowhow and experience. The web-based portal provides a real-time view of connected equipment in the boiler room. The data is stored and used by the customer, Miura personnel, and representatives to track system health, generate scheduled reports, and provide proactive and preventative maintenance to ensure optimal system reliability. Operators can receive real-time text or email notifications via their smartphone and can monitor over 100 individual points per boiler. Troubleshooting, trend analysis, and related technical documentation can be accessed in seconds from across the plant, across the county, or across the world!

STANDARD FEATURES



View Equipment in Real-Time

Monitor your complete boiler room data in real-time using the latest IoT technology. Boiler operators, company management, Miura representatives and technicians can quickly and easily access boiler room data from anywhere Internet is available to stay informed. Connect additional ancillary equipment using auxiliary PLC contacts mapped to the customizable dashboard – giving you a centralized and secure view into your boiler room and surrounding equipment.



Tailored Alarm Notifications

Stay informed from wherever you are with instant text or email notifications for boiler room equipment cautions and alarms. The real-time and informative data gives operators a step in the right direction to take precautionary measures before problems arise. Individual users can adjust notification settings based on employee roles or preferences.



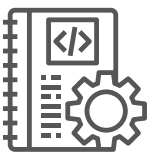
Data Tracking and Trending

Historical data is securely stored in the cloud and used for process consistency by the customer, Miura personnel, and representatives. Trending data aids in understanding boiler room equipment health and areas in need of attention. Users can view the stored data and select customized date ranges to study problems to make an informed decision on the parts and tools to fix it right the first time.



Data Report Generation

Previously time-consuming reports are now automated. Create custom historical data reports in seconds for quick visibility and trend analysis. Customize the start and end date timeline, or view full lifetime info to easily generate CSV reports.



Integrated Technical Documentation

Get the data you need when you need it with easily available content at your fingertips. Quickly find supporting documents to aid in daily tasks, such as water logs and maintenance procedures. Operators can access manuals and technical documentation for connected Miura equipment in one place.



Multiple Location Monitoring

View multiple boiler rooms from one centralized location. Miura Connect gives managers a birds-eye view into the health of the organization's critical steam generation infrastructure nationwide to proactively monitor, conduct trend analysis, ensure procedural compliance, and schedule maintenance or inspections.



Cyber Security

The data collected from the IoT sensors is encrypted securely and automatically transferred to the Miura Connect panel using industry standard protocols. The flow of information is transferred one way from each piece of equipment to Miura Connect to ensure information security is guaranteed.

SUBSCRIPTION PACKAGES

No matter the industry or organization, there is a Miura Connect package that meets your monitoring needs and provides value to operators and managers. Contact one of our experts to discuss which package is right for you.

	Basic	Plus
Real-time Monitoring		
Miura Boilers (over 100 unique signals)	✓	✓
Miura MW-U Water Softeners	✓	✓
Miura Colormetry Hardness Monitor	✓	✓
Other ancillaries and equipment monitoring <i>includes 16 dry contacts, 7 analog and 4 thermocouple. Additional inputs available upon request.</i>	✓	✓
Real-time Alerts		
SMS (text) alerts	--	✓
Email alerts	--	✓
Data Storage		
30-day historical stored data available	✓	✓
365-day historical stored data available	--	✓
Tools		
Knowledge Database and Support Features	✓	✓
Integrated Water Testing Log	✓	✓
Basic Monthly Reports	✓	✓
Detailed Monthly Reports	--	✓
Users and Asset Connections		
User limit	2	10
Primary Assets (Boiler, DA, etc.)	Up to 3 Assets Included <i>(4 or More @ Additional Charge)</i>	
Miura Ancillaries*	Included	
Building Automation Integration		
Local data output (Modbus)	✓	✓

* Miura Ancillaries include MW Softeners and Colormetry. Other Ancillaries connect through the standard I/O Package

BUILDING AUTOMATION OPTIONS

Miura Connect comes with a Modbus output that is ready to integrate with your building's automation system from day one. In addition, the standard package comes with auxiliary I/Os - 16 dry contacts, seven analog, and four thermocouples. Additional connections are available as a custom option.

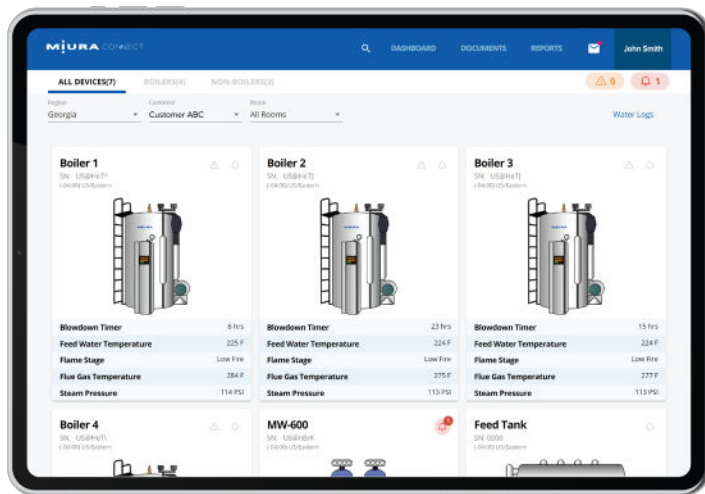
PORTAL INTERFACE

Miura Connect’s real-time monitoring makes supervising critical steam infrastructure a breeze. Whether you are trying to view full system health at a glance or research historical data, the easy to use interface makes finding data and getting answers fast and simple.

To dive deeper into the Miura Connect platform, scan the QR code:



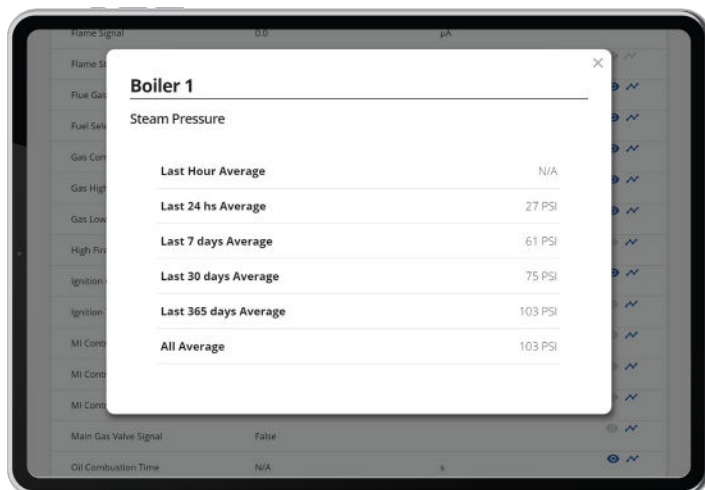
Boiler Room Overview



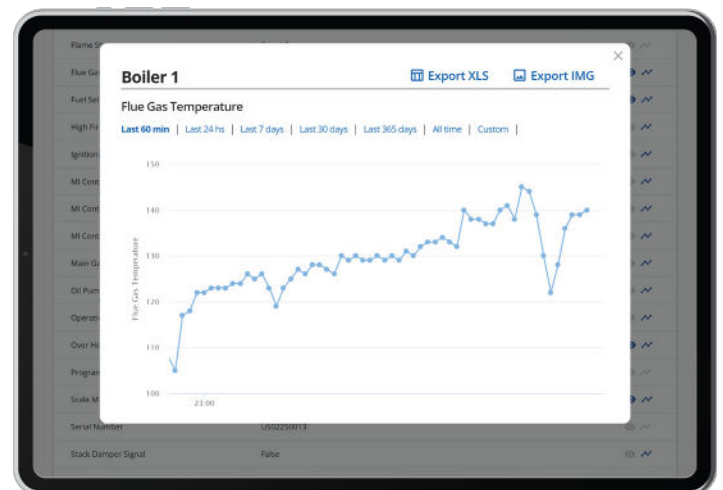
Alarm Notification History

ALARMS(0)			
Type	Description	Created	Resolved
A200-01: Low Water		12/29/20 1:45 AM	12/29/20 1:52 AM
A100-04: Fan Motor Overcurrent		12/22/20 1:19 AM	12/22/20 2:11 AM
A100-04: Fan Motor Overcurrent		12/21/20 7:33 PM	12/22/20 1:15 AM
A100-07: Flame Failure During Transition		12/20/20 8:13 AM	12/20/20 8:13 AM
A100-14: High Fire Damper Error		12/10/20 7:28 AM	12/10/20 7:28 AM
A100-14: High Fire Damper Error		12/09/20 10:15 AM	12/09/20 10:15 AM
A100-14: High Fire Damper Error		12/09/20 9:50 AM	12/09/20 10:08 AM

Equipment Average Detail



Equipment Data Trending



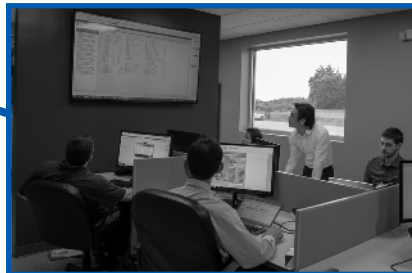
SPECIFICATIONS

Item		Specification
Miura System	Communication Wire Standard	Category 5 shielded cable or better with RJ45 connector
	Maximum Connection Distance	330' (100m)
	Operating Temperature	32°F - 120°F
	Operating Humidity	30–85% (no condensation or freezing)
	Power Supply	120 VAC, 50/60 Hz, single-phase
	Power Consumption	600 VA (max.)
	Full Load Current	5A
	Max. Short Circuit Current	100 kA
	Product Mass	100 lbs.
	Overall Dimensions	30" (H) x 24" (W) x 10" (D)
	Discrete Inputs	(16) 24VDC sinking/sourcing, 8 points per common
	Thermocouple Inputs	(4)
	Analog Signal Inputs	(8) 4-20mA
	Data Connection	Wired Internet or Wi-Fi (User) or Cell Service (Miura)

CONTINUOUS IMPROVEMENT

As technology and customers' needs continue to evolve, so will Miura's Connect.

Leveraging 30+ years of experience with remote monitoring, Miura is proud to launch this next generation mobile, cloud based, customer accessible platform. The nature of this application and the IoT Technology which enables it will allow Miura to continue to optimize the offering and to add additional features and value along the way. Miura Connect will be a living application, with upgrades and features becoming automatically available without the need for on-site updates or additional hardware in most cases.



ON-DEMAND STEAM SOLUTIONS